

Genetic structure and domestication history of the grape

Sean Myles^{a,b,c,d,1}, Adam R. Boyko^b, Christopher L. Owens^e, Patrick J. Brown^a, Fabrizio Grassi^f, Mallikarjuna K. Aradhya^g, Bernard Prins^g, Andy Reynolds^b, Jer-Ming Chia^h, Doreen Ware^{h,i}, Carlos D. Bustamante^b, and Edward S. Buckler^{a,i}

^aInstitute for Genomic Diversity, Cornell University, Ithaca, NY 14853; ^bDepartment of Genetics, Stanford University School of Medicine, Stanford, CA 94305; ^cDepartment of Biology, Acadia University, Wolfville, NS, Canada B4P 2R6; ^dDepartment of Plant and Animal Sciences, Nova Scotia Agricultural College, Truro, NS, Canada B2N 5E3; ^eGrape Genetics Research Unit, United States Department of Agriculture-Agricultural Research Service, Cornell University, Geneva, NY 14456; ^fBotanical Garden, Department of Biology, University of Milan, 20133 Milan, Italy; ^gNational Clonal Germplasm Repository, United States Department of Agriculture-Agricultural Research Service, University of California, Davis, CA 95616; ^hCold Spring Harbor Laboratory, United States Department of Agriculture-Agricultural Research Service, Cold Spring Harbor, NY 11724; and ⁱRobert W. Holley Center for Agriculture and Health, United States Department of Agriculture-Agricultural Research Service, Cornell University, Ithaca, NY 14853

Edited* by Barbara A. Schaal, Washington University, St. Louis, MO, and approved December 9, 2010 (received for review July 1, 2010)

The grape is one of the earliest domesticated fruit crops and, since antiquity, it has been widely cultivated and prized for its fruit and wine. Here, we characterize genome-wide patterns of genetic variation in over 1,000 samples of the domesticated grape, *Vitis vinifera* subsp. *vinifera*, and its wild relative, *V. vinifera* subsp. *sylvestris* from the US Department of Agriculture grape germplasm collection. We find support for a Near East origin of *vinifera* and present evidence of introgression from local *sylvestris* as the grape moved into Europe. High levels of genetic diversity and rapid linkage disequilibrium (LD) decay have been maintained in *vinifera*, which is consistent with a weak domestication bottleneck followed by thousands of years of widespread vegetative propagation. The considerable genetic diversity within *vinifera*, however, is contained within a complex network of close pedigree relationships that has been generated by crosses among elite cultivars. We show that first-degree relationships are rare between wine and table grapes and among grapes from geographically distant regions. Our results suggest that although substantial genetic diversity has been maintained in the grape subsequent to domestication, there has been a limited exploration of this diversity. We propose that the adoption of vegetative propagation was a double-edged sword: Although it provided a benefit by ensuring true breeding cultivars, it also discouraged the generation of unique cultivars through crosses. The grape currently faces severe pathogen pressures, and the long-term sustainability of the grape and wine industries will rely on the exploitation of the grape's tremendous natural genetic diversity.

genomics | SNP array | positive selection | genome-wide association

The grape is the most valuable horticultural crop in the world. The fruit from the world's ~8 million ha of vineyard is mostly processed into wine, but some is destined for fresh consumption as table grapes, dried into raisins, processed into nonalcoholic juice, and distilled into spirits (<http://faostat.fao.org/>). The archaeological record suggests that cultivation of the domesticated grape, *Vitis vinifera* subsp. *vinifera*, began 6,000–8,000 y ago in the Near East from its wild progenitor, *Vitis vinifera* subsp. *sylvestris* (1). The thousands of grape cultivars in use today have been generated since then by vegetative propagation and by crosses.

Wine and table grapes currently receive intense chemical applications to combat severe pathogen pressures. This susceptibility to disease, however, is not attributable to a lack of genetic diversity. *Vinifera* harbors levels of genetic variation an order of magnitude greater than humans and is comparable in diversity to maize (2, 3), with polymorphism that dates back tens of millions of years (4). Thus, an environmentally sustainable grape-growing industry will rely on accessing and using the grape's tremendous genetic diversity to develop improved disease-resistant grape cultivars through marker-assisted breeding (5). Traditionally, grape breeding programs have sought genotype-phenotype as-

sociations using linkage mapping. Because of the grape's long generation time (generally 3 y), however, establishing and maintaining linkage-mapping populations is time-consuming and expensive. Thus, genome-wide association (GWA) (6) and genomic selection (GS) (7) are attractive alternatives to traditional linkage mapping in the grape and other long-lived perennial fruit crops.

Well-powered GWA and GS require a genome-wide assessment of genetic diversity, patterns of population structure, and the decay of linkage disequilibrium (LD). To this end, we recently discovered over 70,000 high-quality SNPs in the grape using next-generation DNA sequencing (4). From this SNP set, we developed and validated a 9,000-SNP genotyping array (the Vitis9kSNP array). Here, we present an analysis of genotype data from 950 *vinifera* and 59 *sylvestris* accessions using the Vitis9kSNP array as part of an effort to characterize an entire US Department of Agriculture (USDA) germplasm collection on a genome-wide scale. We provide a refined model of the domestication and breeding history of *vinifera* by evaluating levels of haplotype diversity, the decay of LD, and patterns of population structure in *vinifera* and its progenitor, *sylvestris*. In addition, our analyses reveal extensive clonal relationships among cultivars and a complex pedigree structure within *vinifera* that are the result of widespread vegetative propagation. We suggest that the last several thousand years of grape breeding explored only a small fraction of possible genetic combinations and that future marker-assisted breeding efforts therefore have tremendous diversity at their disposal to produce desirable wine and table grapes with resistance to existing and future pathogens.

Results

Pedigree Analysis Within *vinifera*. We used the Vitis9KSNP array (4) to generate 5,387 SNP genotypes from 950 *vinifera* accessions (451 table grape accessions, 469 wine grape accessions, and 30 accessions of unknown type) from the grape germplasm collection of the USDA, one of the most comprehensive repositories of grape diversity in the world. Currently, there are over 10,000 grape cultivar names in use worldwide (8), and their classification is often confusing because of homonyms, synonyms, scarce or incorrect historical information, and curation error. Some

Author contributions: S.M., D.W., C.D.B., and E.S.B. designed research; S.M. and J.-M.C. performed research; F.G., M.K.A., and B.P. contributed new reagents/analytic tools; S.M., A.R.B., C.L.O., P.J.B., and A.R. analyzed data; and S.M., C.D.B., and E.S.B. wrote the paper.

The authors declare no conflict of interest.

*This Direct Submission article had a prearranged editor.

Freely available online through the PNAS open access option.

¹To whom correspondence should be addressed. E-mail: smm367@cornell.edu.

This article contains supporting information online at www.pnas.org/lookup/suppl/doi:10.1073/pnas.1009363108/-DCSupplemental.

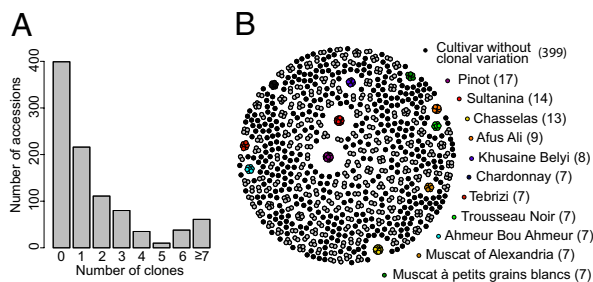


Fig. 1. Clonal relationships within the USDA grape germplasm collection. (A) Number of clonal relationships was evaluated for each of the 950 *vinifera* accessions. Most of the accessions [551 (58%) of 950 accessions] have a clonal relationship with at least 1 other accession. (B) Degree of clonal relatedness among all 950 *vinifera* accessions is represented as a set of clusters. The 399 accessions that do not have a clonal relationship with another accession are shown as lone black dots. Accessions with six or fewer clonal relationships are grouped together with their clones and shown in gray. Clusters of clones with ≥ 7 accessions are colored, and their names are indicated in the legend. Names listed in the legend are the prime names from the Vitis International Variety Catalogue (<http://www.vivc.de/>).

cultivars have been differentiated into several through the vegetative propagation of somatic mutants (9), and we expect clones derived from the same cultivar to be genetically identical at the tested marker loci. We find that 551 (58%) of the 950 *vinifera* accessions are clones of at least 1 other accession in the USDA grape germplasm collection. Many clonal relationships are restricted to pairs of accessions, but groups of up to 17 accessions were found to be clonally related (Fig. 1). We determined that there are 583 unique *vinifera* cultivars in the USDA grape germplasm collection: 399 accessions with no clonal relationships and an additional 184 accessions composed of one accession from each set of clones.

The grape is a vegetatively propagated outcrossing perennial species, which means that old cultivars propagated for hundreds or even thousands of years may coexist with cultivars generated from recent crosses. The potential for selfing and for crosses across interleaved generations, including crosses between related cultivars, makes accurate genealogical reconstruction from genomic data intractable. Nevertheless, we used patterns of identity-by-descent (IBD) and predictions of population genetic theory to infer simple pedigree relationships among the 583 unique *vinifera* cultivars that remained after excluding clonal relationships (*Materials and Methods*). We found that 74.8% of the cultivars are related to at least one other cultivar by a first-degree relationship (Fig. 2A). The resulting complex pedigree structure of our sample can be visualized as a set of networks (Fig. 2B).

The pedigree structure of *vinifera* is characterized primarily by first-degree relationships between grapes of the same type: 89.3% of edges in the network connect table grapes to table grapes or wine grapes to wine grapes (Fig. 2B). A similar trend was found for geography; only 6.1% of connections are between eastern and western cultivars (*SI Appendix, Table S1*). These two categories of connections in the network occur far more often than expected by chance (binomial test, $P < 1 \times 10^{-15}$).

We infer that about half (47.6%) of the first-degree relationships in our sample are likely parent-offspring. The other half (52.4%) we refer to as “sibling or equivalent,” because complex crossing schemes can generate IBD values that are indistinguishable with our data from sibling relationships (*SI Appendix, Fig. S1 and Table S2*). By evaluating Mendelian inconsistencies, we assigned two parents to a cultivar wherever possible and thereby resolved 83 trios (*SI Appendix, Fig. S1 and Table S3*). A network of some well-known cultivars that includes several trios is shown in Fig. 3. *Table S5* contains a list of inferred clonal and first-degree relationships for each cultivar. The assignment of clonal and

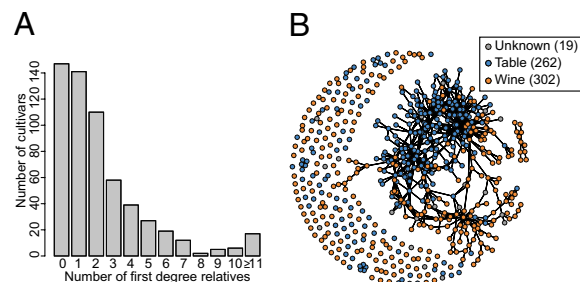


Fig. 2. First-degree relationships within the USDA grape germplasm collection. (A) Number of first-degree relationships was evaluated for each of the 583 unique *vinifera* cultivars. A total of 74.8% of the unique cultivars are related to at least 1 other cultivar by a first-degree relationship, and some cultivars have many first-degree relationships (i.e., >10 ; *SI Appendix, Table S4*). (B) Pedigree structure of *vinifera* is represented as a set of networks. Edges in the network represent inferred first-degree relationships. The vertices, or dots, represent grape cultivars and are colored by grape type (legend). The sample size of each grape type is shown in parentheses. Lone dots represent cultivars with no first-degree relatives in the dataset. Note that one single interconnected network is clearly visible and includes 384 (58.3%) of the 583 unique cultivars that are interconnected by a series of first-degree relationships.

pedigree relationships from the present study will be verified in the field by germplasm curators and used to improve the accuracy of the USDA grape germplasm collection.

Haplotype Diversity and LD Decay. To evaluate the effects of domestication on levels of genetic diversity, haplotype diversity was measured in nonoverlapping sliding windows of varying sizes across the grape genome. Although we observe a statistically significant reduction in haplotype diversity in *vinifera* compared with *sylvestris* ($P < 1 \times 10^{-5}$ for eight or more SNP haplotypes), the observed reduction is relatively minor (*SI Appendix, Fig. S2*). Moreover, the decay of LD is very rapid in *vinifera* and appears unchanged between the wild ancestor and the domesticated grape (*SI Appendix, Fig. S2*). The identification of *sylvestris* is notoriously difficult because of the morphological similarity between *sylvestris* and *vinifera* and the ease with which they cross (10, 11). All studies that make use of *sylvestris* samples should therefore be interpreted with caution. Details of the *sylvestris* samples used in the present study and the impact of potential misidentification are provided in the *SI Appendix*.

Grape Domestication History. Although the reduction of diversity attributable to domestication and breeding appears to be weak on a genome-wide scale [i.e., much weaker than in the tomato (12) and likely even weaker than in highly diverse maize (13)], a few notable changes in morphology have emerged since grape domestication, including perfect flowers, larger berry sizes, higher sugar content, and a wide range of berry colors (14). To identify genomic regions potentially responsible for these domestication traits, we scanned the genome for signatures of selection and identified a 5-Mb candidate domestication locus on chromosome 17 (*SI Appendix, Fig. S3*). Although the long-range LD generated by strong selection over a few generations prevents gene-level dissection of such loci, extended LD may also be exploited to identify genotype-phenotype associations. To test this, we performed a GWA study for berry color and identified a 5-Mb region on chromosome 2 that encompasses a group of MYB transcription factor genes known to be the major determinants of grape color (15, 16) ($P = 4.8 \times 10^{-12}$; *SI Appendix, Fig. S4*). We also observe a strong signal of positive selection for white grapes around this locus, consistent with intense breeding for lighter berry color and the rapid spread of the MYB mutations responsible for reduced pigmentation (17) (*SI Appendix, Fig. S4*).

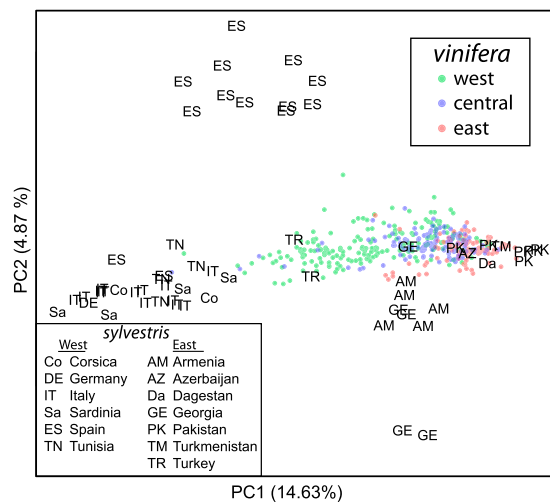


Fig. 4. Visualization of genetic relationships among *sylvestris* and *vinifera*. PC axis 1 (PC1) and PC2 were calculated from 59 *sylvestris* samples, and 570 *vinifera* samples were subsequently projected onto these axes. The proportion of the variance explained by each PC is shown in parentheses along each axis. The *vinifera* samples are represented by circles, and their origins are indicated in the legend. The countries or regions of origin of the *sylvestris* samples are represented by two-letter codes provided in the legend.

support for a scenario in which western *vinifera* are a mixture of eastern *vinifera* and western *sylvestris* ($f_3 = -0.00481$, Z score = -195.5), and we find no evidence of introgression from western *vinifera* into western *sylvestris* ($f_3 = 0.0268$, Z score = 480.1 ; *Materials and Methods*). Thus, our data are consistent with an origin of *vinifera* in the Near East with subsequent introgression from wild *sylvestris* into *vinifera* in Europe.

Discussion

The use of genetic information is increasingly being used to guide breeding efforts in many crops, including the grape (5). Because establishing and evaluating linkage-mapping populations is time-consuming and costly, GWA and GS are particularly promising methods for marker-assisted breeding programs in long-lived perennial crops (19, 20). The present study provides the initial steps toward GWA and GS in the grape by providing the most comprehensive genome-wide assessment of a fruit crop to date.

Archaeological evidence suggests that grape domestication took place in the South Caucasus between the Caspian and Black Seas and that cultivated *vinifera* then spread south to the western side of the Fertile Crescent, the Jordan Valley, and Egypt by 5,000 y ago (1, 21). Our analyses of relatedness between *vinifera* and *sylvestris* populations are consistent with archaeological data and support a geographical origin of grape domestication in the Near East (Fig. 4 and Table 1). Grape growing and winemaking then expanded westward toward Europe, but the degree to which local wild *sylvestris* from Western Europe contributed genetically to Western European *vinifera* cultivars remains a contentious issue (1, 22–24). Our results, based on F_{st} (Table 1), PCA (Fig. 4), and the 3-population test for mixture, all support a model in which modern Western European cultivars experienced introgression from local wild *sylvestris*. Future high-resolution genetic mapping will help to reveal if specific adaptations were involved in this introgression (e.g., climate, pathogens, flavor).

Analyses of haplotype diversity and LD suggest that grape domestication involved a weak bottleneck, because present-day wine and table grapes capture much of the haplotype diversity observed in *sylvestris* and the decay of LD appears unchanged between *vinifera* and *sylvestris* (*SI Appendix*, Fig. S2). These

results are in agreement with previous studies showing no reduction in genetic diversity in *vinifera* compared with its wild ancestor (22, 23, 25, 26) and with the relatively minor changes in morphology observed between *sylvestris* and *vinifera* (11). A recent study found a significant increase in LD in *vinifera* compared with *sylvestris* using 36 microsatellites, however (26). This result is reconcilable with our findings because the use of microsatellites, which evolve more rapidly than SNPs, will amplify the signal of the weak domestication bottleneck that we detect (*SI Appendix*, Fig. S2). Many of the SNPs assayed by the Vitis9kSNP array have likely been segregating for millions of years (4), and our measure of LD decay thus captures recombination events deeper into the grape's evolutionary history than LD measured from microsatellites. Although we are unable to provide precise estimates of the severity of the grape domestication bottleneck with the current dataset, it is evident that LD, as measured by r^2 between SNPs, decays rapidly in *vinifera*, far more quickly than in humans (27), *Arabidopsis* (28), rice (29), and maize (30, 31). For this reason, we conclude that well-powered GWA studies in the grape will require whole-genome sequencing, as in other high-diversity plants with rapid LD decay (19). Nevertheless, for traits that were selected during domestication and/or breeding, the resulting increase in LD means that a relatively low marker density will often suffice to identify diffuse association peaks using GWA. We demonstrate this by mapping the locus responsible for lighter berry pigmentation, a trait that experienced strong artificial selection, using GWA (*SI Appendix*, Fig. S4).

Our weak bottleneck model for grape domestication also fits well with the recorded widespread use of vegetative propagation during the history of *vinifera*: Many cultivars in use today may be only a small number of generations removed from the wild progenitor (21, 24). Vegetative propagation immortalizes a cultivar by allowing numerous genetically identical copies to be produced, but it also enables clones with unique traits to be generated by propagating tissue from the mother plant, which carries somatic mutations leading to unique phenotypes (9). For example, Pinot has been extensively propagated into clones with diverse phenotypes, such as lighter berry color (e.g., Pinot Blanc, Pinot Gris) and pigmented pulp (Pinot Teinturier). We find that Pinot has the most clonal diversity in the USDA grape germplasm collection, with 17 accessions that are clonally related (Fig. 1B). Although we observe misclassification in our dataset (*SI Appendix*, *SI Text*), we mostly verify well-known clonal relationships among cultivars like Hanepoot and Muscat of Alexandria; Sultanina, Kishmish, and Thompson Seedless; and Sauvignon Blanc and Sauvignon Gris. Thus, our data suggest that a considerable proportion of the morphological diversity maintained by the USDA grape germplasm collection is the result of spontaneous somatic mutations captured through vegetative propagation rather than that of segregating polymorphism. Identifying the causal genetic variants underlying phenotypic variation among clones will be a challenging task for which deep resequencing will be required. As is the case for grape berry color (16, 32), the locus underlying a particular phenotypic difference between clones may be the same locus involved in segregating variation for that phenotype across cultivars. Thus, deep resequencing of the clones we have identified here can be used to complement future genetic mapping efforts in the grape.

Although the adoption of vegetative propagation contributed to the maintenance of high levels of genetic diversity in *vinifera* and enabled the generation of clones with unique traits, we suggest that it also reduced grape growers' motivation to undertake extensive crossing and to breed new cultivars. In support of this scenario, we find that 75% of the *vinifera* cultivars in the USDA grape germplasm collection are related to at least one other cultivar by a first-degree relationship (Fig. 2). In fact, 384 (58.3%) of the 583 cultivars form a single-pedigree network:

Over half of the cultivars in the USDA grape germplasm collection are interconnected by a series of first-degree relationships (Fig. 2B). With more extensive sampling of *vinifera*, lone vertices and disjoint networks from Fig. 2B are likely to become increasingly interconnected. Moreover, the pairwise IBD distribution (SI Appendix, Fig. S1) suggests that there are a vast number of higher order pedigree relationships (e.g., second and third degree) within the present set of *vinifera* cultivars. Thus, the genetic structure of *vinifera* can be largely understood as one large complex pedigree. We propose that this pedigree structure is the result of a limited number of crosses made among elite cultivars that were immortalized and sometimes vegetatively propagated for centuries.

Most cultivars have only one or two first-degree relatives in our sample, but a small number of cultivars are highly connected in the network, and thus likely represent ancient cultivars widely used during grape breeding (SI Appendix, Table S4). This is consistent with the previous finding that Pinot and Gouais Blanc are the parents of 16 common French cultivars (33). Most of the highly connected cultivars are table grapes, including Muscat of Alexandria and the world's preeminent raisin grape, Sultanina (Thompson's Seedless). Table grapes have more first-degree relationships than wine grapes (Mann-Whitney U test, $P = 3.72 \times 10^{-8}$), and the high degree of connectivity among table grapes suggests that there was more intense breeding in table grapes than in wine grapes. This result follows from the ease with which table grapes are evaluated compared with wine grapes. The most highly connected wine grape in the present sample is Traminer, which has 20 first-degree relatives and is believed to be an ancient cultivar widely used during the history of grape breeding (34). Fig. 3 provides a more detailed view of relationships among some well-known cultivars and includes several inferred trios. Particularly noteworthy is our discovery that Chenin Blanc and Sauvignon Blanc are likely siblings and both share a parent-offspring relationship with Traminer. Also, we find that two of the most common cultivars of the Rhône Valley in France, Viognier and Syrah, are likely siblings. Not only do we find that elite cultivars were often reused in different crosses but that most first-degree relationships are between grapes of the same type (i.e., wine, table) and between grapes from the same geographic region (i.e., east, west). Together, these observations suggest that grape breeding has been restricted to a relatively small number of cultivars and that only a small number of the possible genetic combinations within *vinifera* have been explored.

We propose that the adoption and widespread use of vegetative propagation has been a double-edged sword during grape breeding. Although the production of fine wine would be impossible without the control over genetic variability that vegetative propagation offers, vegetative propagation has also discouraged the breeding of new cultivars and is at least partially responsible for a worldwide grape industry dominated by cultivars sharing extensive coancestry. Other factors that have contributed to the small number of cultivars in use today include the devastation of European vineyards in the second half of the 19th century by mildews and phylloxera and the development of the global wine industry. Currently, grapes face intense pathogen pressures, and are thus intensely chemically treated. There are numerous examples of sources of resistance to these pathogens, both from wild *Vitis* species and from *vinifera* cultivars that are often found in marginal areas of cultivation and remain largely unexploited (5, 35). The grape is clearly exceptional in terms of its domestication and breeding history compared with most crops studied to date. The *vinifera* grape has retained high levels of genetic diversity since its domestication ~7,000 y ago, yet its genetic variation remains relatively unshuffled within an extended pedigree. Developing an environmentally sustainable wine and grape industry will rely on tapping into this tremendous diversity by genetically characterizing the world's germplasm

collections and using marker-assisted breeding approaches to generate improved cultivars.

Materials and Methods

Sample Collection and Genotype Calling. Leaf tissue was collected from the USDA grape germplasm collections in Davis, California and Geneva, New York, and DNA was extracted using standard protocols. Some *sylvestris* DNA samples were provided by F.G. Genotype data were generated from the custom Illumina Vitis9KSNP array, which assays 8,898 SNPs (4). After quality filters, 5,387 SNPs genotyped in 950 *vinifera* and 59 *sylvestris* samples remained for analysis (SI Appendix, SI Materials and Methods).

Pedigree Construction. We calculated IBD for all pairwise comparisons among the 950 *vinifera* accessions using PLINK (36). We considered pairs of accessions to be genetically identical (i.e., clones, sports) if they had an IBD >95%. For inferences of first-degree relationships based on IBD, we reduced the samples to a set of "unique cultivars," which included 399 accessions without clonal relationships and an additional 184 accessions composed of one randomly chosen accession from each set of clones. We refer to this set of samples as 583 unique *vinifera* cultivars. Our power to estimate IBD reliably is reduced by our relatively small number of SNPs and the ascertainment bias introduced during our SNP discovery procedure. We therefore used known pedigree relationships to calibrate our IBD values. From 43 confirmed parent-offspring relationships (SI Appendix, Table S2), the lowest pairwise IBD value was 0.466; therefore, we considered all pairwise relationships in our data to be likely first-degree relatives if they had an IBD value ≥ 0.466 (SI Appendix, Fig. S1). To differentiate between parent-offspring and other pedigree relationships, we used the Z0 values and Z1 values observed from our confirmed parent-offspring pairs as thresholds for defining other parent-offspring pairs in the data (SI Appendix, Fig. S1 and Table S2). For each cultivar that was related to at least 2 other cultivars with IBD, Z0 and Z1 scores consistent with a parent-offspring relationship, we calculated the proportion of SNPs consistent with Mendelian inheritance for each possible pair of parents. We defined trios in the data by assigning two parents to a cultivar when <1.35% of SNPs were inconsistent with Mendelian inheritance (SI Appendix, Fig. S1 and Table S3). Adjacency matrices and network images were generated using the "network" package in R (37).

Population Structure Analyses. Samples with >20% missing data were removed, and we ensured that no two samples had an Identity-By-State >0.95, which resulted in 570 *vinifera* cultivars and 59 *sylvestris* accessions included in the analysis. Average population-pairwise F_{st} estimates were calculated from all 5,387 SNPs weighted by allele frequency [equation 10 in (38)]. For PCA, SNPs with >20% missing data and minor allele frequency (MAF) <0.05 were excluded. We then pruned the SNPs for LD using PLINK (36) by considering a window of 10 SNPs, removing 1 of a pair of SNPs if LD >0.5, and then shifting the window by 3 SNPs and repeating the procedure. After these filters, 2,958 SNPs remained. PCA was performed using SMARTPCA (39).

3-Population Test for Mixture. We used the 3-population test for mixture (18) to compare a focal population X with two putatively parental populations Y and W to determine whether X, Y, and W are related in a simple tree or whether X is a mixture of Y and W. The f_3 statistic, $f_3(X;Y,W)$, is defined as the normalized product of the frequency difference between populations X and Y and the frequency difference between populations X and W averaged over the full 5,387 SNPs (18). If there is no mixture, such that groups X, Y and W are related by a simple unrooted tree, the expected value of the f_3 statistic is positive. If X is the result of mixture between Y and W, the expected value of the f_3 statistic is negative. We calculated the f_3 statistics for the following scenarios: f_3 (*vinifera* west; *vinifera* east, *sylvestris* west) and f_3 (*sylvestris* west; *vinifera* west, *sylvestris* east). We generated SEs of the f_3 statistics by a Block Jackknife procedure: The data were divided into 289 nonoverlapping blocks of 20 contiguous SNPs, each block was dropped in turn, and the f_3 statistic was calculated to generate a SE estimate. The SE was used to generate Z scores, which provides a measure of confidence in the f_3 statistics. Large Z scores should be viewed as statistically significant but not simply convertible to P values (18).

Haplotype Analyses. To infer haplotypes, we used fastPHASE (40) and included SNPs with a MAF >0.05 and <10% missing data and excluded individuals with >20% missing data. We investigated imputation error rate across different numbers of clusters (K) using 343 SNPs from chromosome 8 in 570 *vinifera* cultivars and 59 *sylvestris* accessions with the following fastPHASE

options: -T10 -C20 -KL1 -KU20 -H4 -Ki1 -Ks5 -Kp.05. We chose $K = 10$ as values above this threshold provided little improvement in performance. This gives an imputation error rate of 0.0638, which is comparable to values reported when phasing SNP data in humans (40). We phased each of the 19 chromosomes using fastPHASE with the $K = 10$ option and the default settings for the remaining options. The analysis included 3,397 SNPs from the 19 assembled chromosomes. Haplotype diversity was calculated as $(n/(n-1))(1 - \sum x_i^2)$, where x_i is the haplotype frequency of each haplotype and n is the sample size (41). Chromosomes with larger numbers of SNPs had lower imputation error rates, but results remain unchanged when haplotype diversity was calculated using all chromosomes vs. only the 6 chromosomes with imputation error rates <0.08 . Haplotype diversity was evaluated across a range of window sizes (SI Appendix, Fig. S2 and Fig. S5).

LD. Samples with $>20\%$ missing data were removed, and we ensured that no two samples had an IBS >0.95 , which resulted in 570 *Vitis vinifera* cultivars and 59 *Vitis sylvestris* accessions included in the analysis. We only considered SNPs from the 19 assembled chromosomes with MAF >0.05 and $<20\%$ missing data, which resulted in 3,558 SNPs in *Vitis vinifera* and 3,349 SNPs in *Vitis sylvestris*. LD, as measured by r^2 , was calculated using PLINK (36).

Grape Color Association. Grape color was recorded on September 8–15, 2008, using the USDA grape germplasm in Davis, California. The following scale was used: 1 = gray/white, 2 = yellow, 3 = green, 4 = rose, 5 = red, 6 = red/black, and 7 = blue/black. We performed a GWA study for grape color in 289 *Vitis vinifera* accessions for which genotype and phenotype data were available. After excluding SNPs with MAF <0.05 and $>10\%$ missing data, 5,110 SNPs remained for analysis. GWA was performed using the mixed model (42) implemented in EMMA (43), with the IBS matrix from PLINK (36) as a random effect. Signatures of selection were evaluated by dividing cultivars into white (scores = 1, 2, and 3; $n = 139$) and red (scores = 5, 6, and 7; $n = 112$).

ACKNOWLEDGMENTS. We thank Heidi Schwaninger, Dianne Velasco, Amy Szewc-McFadden, and Chuck Simon for DNA preparation and distribution; Bill Srmack, Dave Beckhorn, Greg Noden, Robert Martens, and Dawn Dellefave for germplasm maintenance and distribution; Gan-Yuan Zhong, Lance Cadle-Davidson, Jean-Luc Jannink, Peter Bradbury, and Martha Hamblin for discussion; Mehmet Somel, Elliot Heffner, and Aaron Lorenz for comments on drafts of the manuscript; and Kristy Goodwin for assistance with figures. C.D.B. and A.R.B. were partially supported by National Science Foundation Grant 0701382 and A.R.B. by National Science Foundation Grant 0948510.

- McGovern PE (2003) *Ancient Wine: The Search for the Origins of Viticulture* (Princeton Univ Press, Princeton).
- Lijavetzky D, Cabezas JA, Ibáñez A, Rodríguez V, Martínez-Zapater JM (2007) High throughput SNP discovery and genotyping in grapevine (*Vitis vinifera* L.) by combining a re-sequencing approach and SNPlex technology. *BMC Genomics* 8: 424–435.
- Buckler ES, Gaut BS, McMullen MD (2006) Molecular and functional diversity of maize. *Curr Opin Plant Biol* 9:172–176.
- Myles S, et al. (2010) Rapid genomic characterization of the genus *Vitis*. *PLoS ONE* 5: e8219.
- di Gaspero G, Cattonaro F (2010) Application of genomics to grapevine improvement. *Aust J Grape Wine Res* 16:122–130.
- McCarthy MI, et al. (2008) Genome-wide association studies for complex traits: Consensus, uncertainty and challenges. *Nat Rev Genet* 9:356–369.
- Heffner EL, Sorrells ME, Jannink J-L (2009) Genomic selection for crop improvement. *Crop Sci* 49:1–12.
- Allewelt G (1997) Genetics of grapevine breeding. *Prog Bot* 58:441–454.
- Pelsy F (2010) Molecular and cellular mechanisms of diversity within grapevine varieties. *Heredity* 104:331–340.
- Di Vecchi-Staraz M, et al. (2009) Low level of pollen-mediated gene flow from cultivated to wild grapevine: Consequences for the evolution of the endangered subspecies *Vitis vinifera* L. subsp. *silvestris*. *J Hered* 100:66–75.
- This P, Lacombe T, Thomas MR (2006) Historical origins and genetic diversity of wine grapes. *Trends Genet* 22:511–519.
- Miller JC, Tanksley SD (1990) RFLP analysis of phylogenetic relationships and genetic variation in the genus *Lycopersicon*. *Theor Appl Genet* 80:437–448.
- Eyre-Walker A, Gaut RL, Hilton H, Feldman DL, Gaut BS (1998) Investigation of the bottleneck leading to the domestication of maize. *Proc Natl Acad Sci USA* 95: 4441–4446.
- Olmo HP (1995) The origin and domestication of the *Vitis vinifera* grape. *The Origins and Ancient History of Wine*, ed McGovern PE (Gordon and Breach, Amsterdam), pp 31–43.
- This P, Lacombe T, Cadle-Davidson M, Owens CL (2007) Wine grape (*Vitis vinifera* L.) color associates with allelic variation in the domestication gene *VvmybA1*. *Theor Appl Genet* 114:723–730.
- Fournier-Level A, et al. (2009) Quantitative genetic bases of anthocyanin variation in grape (*Vitis vinifera* L. ssp. *sativa*) berry: A quantitative trait locus to quantitative trait nucleotide integrated study. *Genetics* 183:1127–1139.
- Fournier-Level A, Lacombe T, Le Cunff L, Boursiquot JM, This P (2010) Evolution of the *VvMybA* gene family, the major determinant of berry colour in cultivated grapevine (*Vitis vinifera* L.). *Heredity* 104:351–362.
- Reich D, Thangaraj K, Patterson N, Price AL, Singh L (2009) Reconstructing Indian population history. *Nature* 461:489–494.
- Myles S, et al. (2009) Association mapping: Critical considerations shift from genotyping to experimental design. *Plant Cell* 21:2194–2202.
- Nordborg M, Weigel D (2008) Next-generation genetics in plants. *Nature* 456: 720–723.
- Olmo H (1995) Grapes. *Evolution of Crop Plants*, eds Smartt J, Simmonds N (Longman, New York), 2nd Ed, pp 485–490.
- Grassi F, et al. (2003) Evidence of a secondary grapevine domestication centre detected by SSR analysis. *Theor Appl Genet* 107:1315–1320.
- Aradhya MK, et al. (2003) Genetic structure and differentiation in cultivated grape, *Vitis vinifera* L. *Genet Res* 81:179–192.
- Arroyo-García R, et al. (2006) Multiple origins of cultivated grapevine (*Vitis vinifera* L. ssp. *sativa*) based on chloroplast DNA polymorphisms. *Mol Ecol* 15:3707–3714.
- Barnaud A, Lacombe T, Doligez A (2006) Linkage disequilibrium in cultivated grapevine, *Vitis vinifera* L. *Theor Appl Genet* 112:708–716.
- Barnaud A, Laucou V, This P, Lacombe T, Doligez A (2010) Linkage disequilibrium in wild French grapevine, *Vitis vinifera* L. subsp. *silvestris*. *Heredity* 104:431–437.
- Pritchard JK, Przeworski M (2001) Linkage disequilibrium in humans: Models and data. *Am J Hum Genet* 69:1–14.
- Kim S, et al. (2007) Recombination and linkage disequilibrium in *Arabidopsis thaliana*. *Nat Genet* 39:1151–1155.
- Mather KA, et al. (2007) The extent of linkage disequilibrium in rice (*Oryza sativa* L.). *Genetics* 177:2223–2232.
- Remington DL, et al. (2001) Structure of linkage disequilibrium and phenotypic associations in the maize genome. *Proc Natl Acad Sci USA* 98:11479–11484.
- Tenaillon MI, et al. (2001) Patterns of DNA sequence polymorphism along chromosome 1 of maize (*Zea mays* ssp. *mays* L.). *Proc Natl Acad Sci USA* 98:9161–9166.
- Kobayashi S, Goto-Yamamoto N, Hirochika H (2004) Retrotransposon-induced mutations in grape skin color. *Science* 304:982.
- Bowers J, et al. (1999) Historical Genetics: The Parentage of Chardonnay, Gamay, and Other Wine Grapes of Northeastern France. *Science* 285:1562–1565.
- Regner F, Stadlhuber A, Eisenheld C, Kaserer HAH (2000) Considerations about the evolution of grapevine and the role of Traminer. *Acta Hort* 528:179–184.
- Coleman C, et al. (2009) The powdery mildew resistance gene *REN1* co-segregates with an NBS-LRR gene cluster in two Central Asian grapevines. *BMC Genet* 10:89–109.
- Purcell S, et al. (2007) PLINK: A tool set for whole-genome association and population-based linkage analyses. *Am J Hum Genet* 81:559–575.
- Butts C (2008) Network: A package for managing relational data in R. *J Stat Softw* 24: 1–36.
- Weir BS, Cockerham CC (1984) Estimating F-statistics for the analysis of population structure. *Evolution* 38:1358–1370.
- Patterson N, Price AL, Reich D (2006) Population structure and eigenanalysis. *PLoS Genet* 2:e190.
- Scheet P, Stephens M (2006) A fast and flexible statistical model for large-scale population genotype data: Applications to inferring missing genotypes and haplotypic phase. *Am J Hum Genet* 78:629–644.
- Nei M (1987) *Molecular Evolutionary Genetics* (Columbia Univ Press, New York).
- Yu J, et al. (2006) A unified mixed-model method for association mapping that accounts for multiple levels of relatedness. *Nat Genet* 38:203–208.
- Kang HM, et al. (2008) Efficient control of population structure in model organism association mapping. *Genetics* 178:1709–1723.